

0

.....	1
.....	2
( ..... 21 ) ..	2
.....	10
( 2007 3 ) .....	11
( [2007] 9 ) .....	14
( ..... 2007 23 ) .....	17
( [2014] 7 ) .....	19
( ..... [2014] 14 ) .....	22
.....	23
( ..... 2007 3 ) .....	23
( ..... 2007 6 ) .....	28
( ..... 2007 7 ) .....	32
.....	38
( ..... 2009 5 ) .....	43
( ..... [2009] 11 ) .....	46
( ..... 2011 97 ) .....	54
( ..... 2013 10 ) .....	55
.....	64
( ..... ) ( ..... 2009 14 ) .....	64
( ..... 2015 46 ) .....	64

	.....	76
		2015
20	.....	85
	2015 21 .....	89
		2015
22	.....	92
	2015 23 .....	98
		2015
24	.....	100
		2015 25
	.....	102
		2015
26	.....	104
	2015 27 .....	106
		2015
28	.....	108
	2015 29 .....	109
		2015 30
	.....	112
	2015 31 .....	115

2007

0

1

( 21 )

2005 2 4

2005 9 1

“

”



] A  
.

2

F

A

5









5

15

15

30

2005 9 1

9

[1995] 4

" "

( 2007 3 )

2007

" "

9 1

< >

[ 2005] 42

2005

9 30

3

2007



( [2007] 9 )

"

"

2007



2007 5

∞

[1]

(

2007 23 )

2008

"

"

"

"

"

"

"

"

2008

∞

( [ 2014] 7 )

1

2

2010

2015

2014

2014

2010

2010

2000

2015 3 31

3

1. 

. doc

2014 12 22

		2013
( )		
		2009
		2014
		2009
( )		
		2010
( )		2001
		2007



(

[2014] 14 )

“ ”

”

”

“ ”

”

”

”

”

<http://www.chsi.com.cn>

2014 5 5

( 2007 3 )

2

3

4

5

6

1

2

" " "

"

"

" "

"

3

60

2 " "

3

5 11

4

5



(

2007 6 )

“ ”

1

2

3

4

5

2008

6

7

8



9

10

11

2006 69

12

13

14

15 2007

" "

1

" "

2

"

"

" "

16

( 2007

7 )

1

100

1

1 2

1



5 11

5 11







1990 023





2009 6 1

1991 18

( 2009 5 )

( ( ) )

" "

( )

( )

( )

“ ”

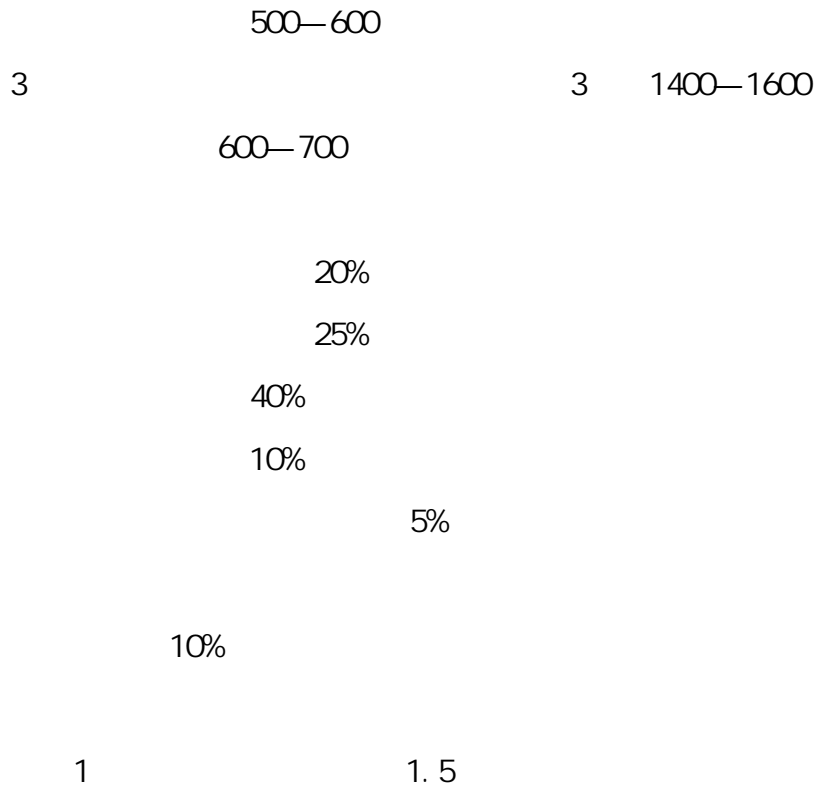
2009 6 1

91 18



( [2009] 11 )

			4	
2			5	
2 5				
1				
1		4	2400—2800	
2			2	1200—1400
2				
1		5	2400—2800	
	1000—1200			
2			2 5	1200—1400



40%

1: 15—20

“ ”





2009 12 1

1997 16



(

2011 97 )

2011

2012 1 15

( 2013

10 )

21 "

"

<

>

2001 4

<

>

( 2007 3 )

1.

2

1.

<http://www.chsi.com.cn>

" "

2

" "

0

3.

1

2

3

4

3 1

1.

" "

2

1

2

3

1991

1.

2

1

2

3

4

5

6

7

3.

1

2

3

4

1

2

3

4

5

4.

1

1.

2

1

2

3

4

5

3.

2

1.

2

3.

4.

6 12

3

1.

2

3.

4.

5.

6.

" - "

1.

4

2

1

2

1 1

7 1

3

"

"

4

1.

2

12

5 +

4 +

3

3.

"

"

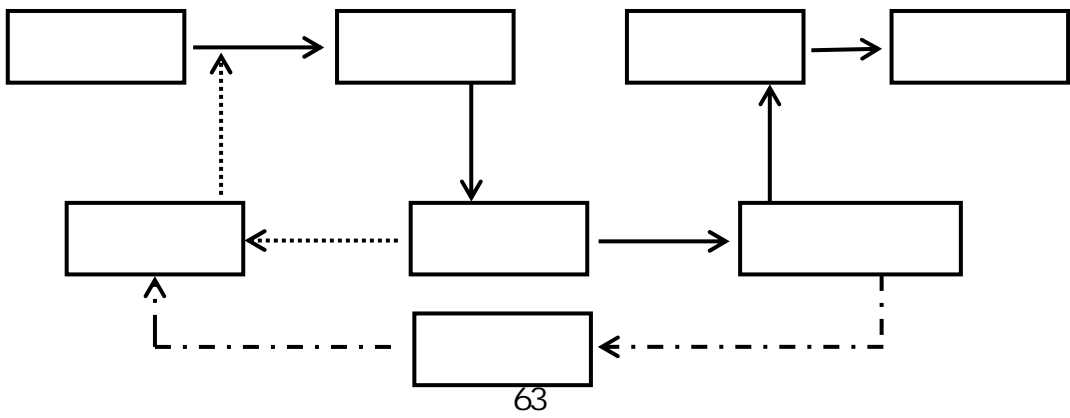
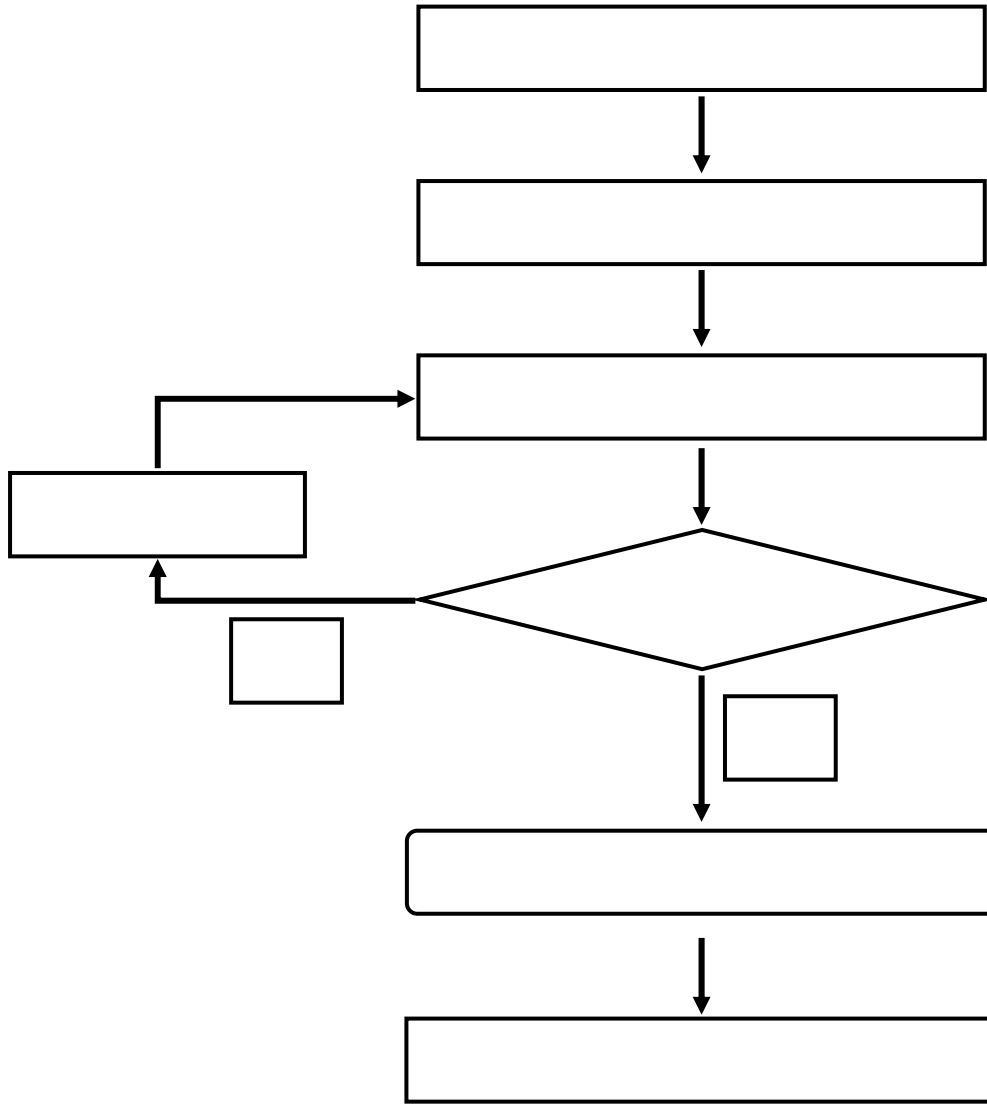
2014 1 1

- 1.
- 2
- 3.
- 4.

	" / _____ "								
1									
2	"	"			"	"	"	"	"
3					"	"			
4									
5									



1								
2								
3								
4								
5								
6								
7								
8								
9								
10								
	1							
	2 " "							
	3							







			100			10
	60		60	60		
			"	"		60
60						
				"	"	"
"	"	"	"	"	"	"

5.0      <60                      0                      60                      1.0  
                 >60                      1.0 +                      60 × 0.1

×

/

4

10

15

30

30

“ ”

“ ”

69



3.3

2

2

6

5

30

72

70

115

165

50

100

6

7

5

73

2005 31

85%

3.0

90

90

8

4

90

3

5

2 4

1. 8

2009 2

2009

2005 48

( 2015 46 )

" " " "

1.8





1.

2

3.

4

5

6

7

( )

30%

80%

1

PPT

25

( )

5

( )

5-7

1





20

"

[ 2009] 4

[ 2009] 11 "



3 1400—1600

600—700

20%

25%

40%

10%

5%

10%

3.

4.

1.

2

1.

2

(

)

(

qq Email

( )

( 2 )

2-6

1.

( ) 30% 40% 60% 70%

2

1.

2

3

3-4

60

60

60

2015 21

2009 4

1.

2

3.

4.

1.

2

3.

4.

5.

6.

1

2015 46

2015

22

( 2011 97 )

2005 48

2009 14

2011 97





3

( )

1

2

3

4

5

6

35

" " " "

( )



“ ”

“ ”

“ ”

( )

2015 46



2015 23

- 1.
- 2.
- 3.
- 4.
- 5.

“

”

1. 60

2

3

4

1.

2

3

4

5

6

7.

8

9.

10.

11.

12

1.

2

3.

4.

5.

6

7.

8



1 2

( )

( )

( )

5

3

102


1.

2

3.

1.

2

30%

3.

80%

20%

4.

A B

30%

5.

8K

2cm

3cm

6.

8K

7.

120

A B

20

5

3

2015 27

5

10



[ 2009 ] 4

[ 2000 ] 311

2015 29

( )

( 002 )

( [1993]12 )



( )

( )

( )

( )

( )

( )

1

2

3

4

5

6

7

8

9

10

11

12

13

14

15

1

7

4

2

1

2

3

3

1 11 1 6 30

2

3

4

5

1

2

3

4



2015 31

1

2

" "

1

1 .

2 .

3 .

4 .

5 .

6 .

7 .

2

3

1

1

20

2

300

3

3 5

4

5

15

6

7

2

1

2



3

4

5

6

4

A4

7

1

2

1

1

2 3

2

3  
( )

4

2

5

10

6

2

5 10

5 10

2

1

70-79

60-69

90-100

60

80-89

20%

60% 40%

2

3

4

(1)

( )

(2)

(3)

(4)

(5) 60

(6) 60

1-6

( )

( )

1

2

3

4

5

1 .

2 .

1

2 ( )

3 ( )